

BRUSHLESS ALTERNATOR
TYPE A203 – 28V 330A, A203/1/ – 28V 400A

FEATURES:

- High efficiency of 71-85% at all speed ranges.
- Comparative lower weight as compared to other similar class units.
- Long-life, maintenance-free unit with heavy-duty front 6307 and rear 6206, double sealed ball bearing.
- Effective at all speed ranges. Air-cooling system provides low heat density of stator and rectifier system even at high temperature conditions.
- Negative ground, positive ground or insulated system at customer request.

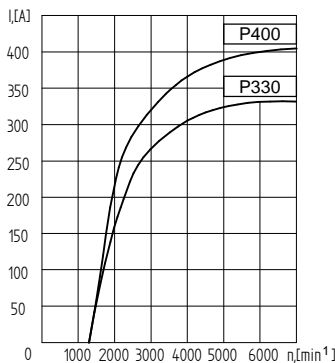
APPLICATIONS:

- TRANSIT AND CITY BUSES
- FIRETRUCKS, SPECIAL VEHICLES
- MOTORCOACH, MOTORHOMES
- OFF-HIGHWAY EQUIPMENT

REPLACEMENTS:

T1 BOSCH Series 28V, 140A

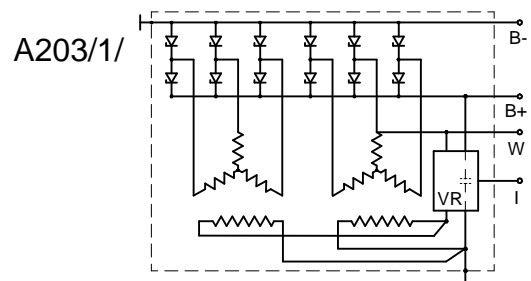
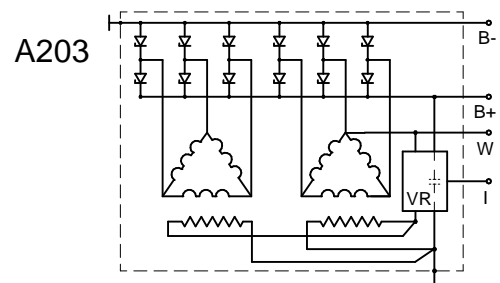
Manufacturer	Bosch	Delco Remy	Prestolite	Dynamo	Dynamo
Series	T1	T1	AC172	A203	A203/1/
Design	Brush	Brush	Brush	Brushless	Brushless
Volts	28	28	28	28	28
Amps@2000rpm	100	100	85	185	220
Efficiency@2000rpm	55%	60%	55%	85%	85%
Amps@6000rpm	140	185	155	330	400
Efficiency@6000rpm	40%	45%	40%	74%	71%
Regulator	Integral	Integral	Integral	Integral	Integral
Weigth, kg	15,5	16,5	16,5	25,5	27
Frame, mm	Ø190	Ø190	Ø190	□203	□203
Length, mm	300	300	300	330	330



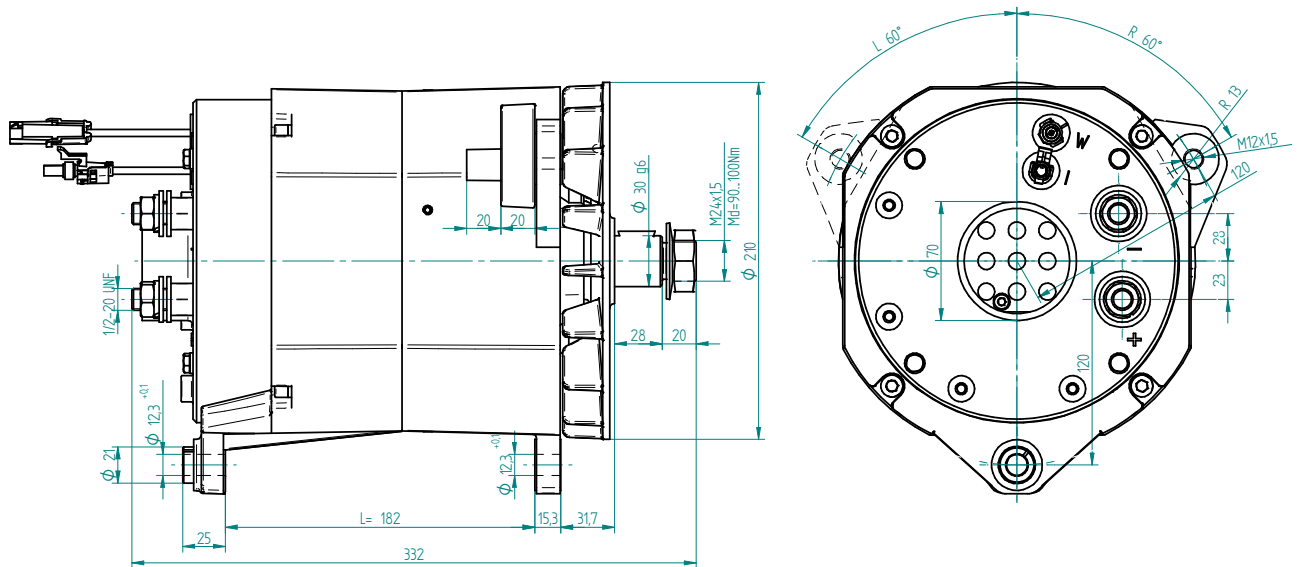
PERFORMANCE CURVE:

Note: All curves are measured at 25°C ambient temperature and stabilized alternator temperature.

CONNECTION DIAGRAM



OUTLINE DRAWINGS



COMPETITIVE INTERCHANGE

Dynamo		Bosch	Delco Remy	Prestolite	Application
Mounting	Part. No.	Part. No.	Part. No.	Part. No.	
R60 ⁰ , Fixed bush, L=180 M12x1,5 front mounting hole ø12,3 rear mounting hole	A203/01/ A203/11/	0120689503, -508, -512, -513, -520, -530, -533, -535, -571	19025330 19025360	1277A640	DAF, MAN, Kässbohrer, Setra, Mercedes-Benz Neoplan, Van Hool
R60 ⁰ , Sliding bush, L=182 ø12,3 front mounting hole, ø12,3 rear mounting hole	A203/02/ A203/12/	0120689511, -548, -552, -566	19025337 19025367	1277A680 1277A700	Cummins, DAF, Deutz, Iveco, MAN, Mercedes-Benz, Scania, Volvo
L60 ⁰ , Sliding bush, L=182 M12x1,5 front mounting hole ø12,3 rear mounting hole	A203/03/ A203/13/	0120689507, -517, -522, -527 -540, -541, -542 -546, -567	19025333 19025363	1277A720	DAF, MAN Kässbohrer (Setra) Mercedes-Benz Neoplan, Leibherr
L60 ⁰ , Fixed bush, L=180 M12x1,5 front mounting hole ø12,3 rear mounting hole	A203/04/ A203/14/	0120689506, -567	19025336 19025366	1277A650	Kässbohrer (Setra) Mercedes-Benz, MAN

DYNAMO INC, PO BOX 273

1 Sofiisko shosse Str., 8800 Sliven BULGARIA tel. +359 44 666 207; 666 208 ;
fax. +359 44 622 291;; e-mail: dynamo@dynamo-bg.com; web site: www.dynamo-bg.com